

Critical Power Bulletin

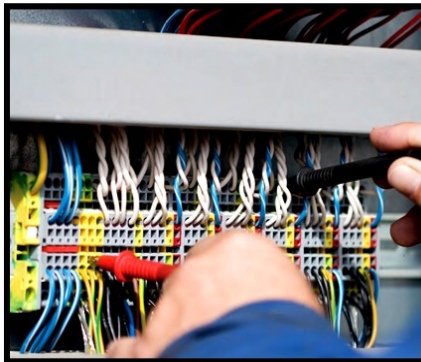
What is a UPS consist of?

A UPS is essentially a series of batteries that maintains power to critical pieces of equipment that cannot withstand a power interruption. A UPS protects equipment from such elements as power interruptions, voltage variations, frequency variations and transient disturbances.

As technology advances, more pieces of equipment require uninterruptible power, making a reliable UPS increasingly crucial in any facility. Upon losing utility power to a facility, it often can take 10 seconds or more for the generators to start and power to transfer to the emergency source. Most electronic equipment will not tolerate more than a few cycles of power disruption without shutting down.

Minimizing disruptions to the power source starts during the power system's design phase. A reliable power system depends on quality equipment and reliable design. A facility's UPS should be designed to protect critical and high-tech equipment and to facilitate planned power outages so technicians can perform maintenance.

Volume 1, Issue 2, Feb. 2012



Recommendations to Maintain UPS Units

Simply providing an uninterruptible power system (UPS) does not necessarily ensure an institutional or commercial facility's equipment is protected from power-supply fluctuations and distortions. Maintenance and engineering managers must factor in regular testing and maintenance of a facility's UPS to ensure it remains in peak operating condition, protects critical systems, and keeps them reliably operating as designed.

TIP OF THE MONTH

When not having a Preventive Maintenance Plan in effect many things can be overlooked. One of the major components that are overlooked is the AC and DC caps; something minimal that could cause great damage. Dust particles enter the unit, creating excessive heat, this heat may cause the AC and DC caps to enlarge (swell). If not detected in time these caps may rupture and release fluid causing major damage to the unit. This is not only costly to repair, but may cause the unit to drop a load or simply shut down completely. Another difficulty you may face when repairing these units is not finding discontinued parts and units. It is recommended to have a minimum of one PM conducted once a year; to make sure everything is working properly.

